

**NETHERLANDS PHILATELISTS
of CALIFORNIA
(now in its 46th year)**

Correspondence to:

Franklin Ennik
3168 Tice Creek Drive # 3, Walnut Creek, CA 94595
E-mail: ennik123@att.net
Telephone: (925)-952-9424

Honorary Members:

†John Heimans
George Vandenberg
†Ralph Van Heerden
Website: <http://www.npofc.org>

February 2015

January meeting. In lieu of the scheduled NPofC January meeting and because of circumstance, HansPaul Hager, Hans Kremer, Franklin Ennik and Stuart Leven met at the Western Philatelic Library in Redwood City, CA to re-arrange the books and journals of the ASNP Library holdings that had recently been placed there. The health of ASNP Librarian Paul Swierstra recently took a turn for the worse and he can no longer effectively care for the Library at his home, so it was moved to the WPL for safe keeping. Paul is now recovering.

YEARBOOK anyone???? NPofC's eighth (and latest) Yearbook was published in 2009. Several of our members have expressed interest in producing our next one and titles of proposed articles have been aired to start things off. NPofC members have gathered a wealth of knowledge about their special focus regarding Netherlands and former territories philately. Are there any philatelic topics that you've been thinking about that need airing, summarized or clarified?? What say you, members.....Let's hear from you and get your knowledge in print so it doesn't get lost. Send us a proposed title and short summary of your project idea.

Annual Holiday dinner. Our January Holiday dinner at Uncle Yu's Asian Restaurant in San Ramon on Saturday, January 10, 2015 was a grand success. Current and former spouses and significant others were invited and everyone enjoyed themselves immensely. We were especially glad to see Claire Vandenberg, Eve Heimans, JoAnn Miller, Pam Loughheed and Paul Swierstra with us around the table.

WESTPEX 2015. The 2015 WESTPEX Stamp show is scheduled for April 24-26, 2015 at the San Francisco Airport Merriott Hotel, Burlingame, CA. NPofC has reserved a meeting room for this event on Friday 24 April 2015 and all members and the public are invited to attend. Franklin Ennik will give a presentation, **Attempts by the German occupiers to issue Occupation Stamps for the Netherlands in 1940 and the disappearance of Dutch Stamp stocks from Enschede Printers.** For meeting times and location check the official 2015 WESTPEX program catalogue or their website.

Due to the memorial for the celebration of Albert Mullers' life to be held on February 21, 2015, our February meeting will be re-scheduled to February 28, 2015. Make a note of the change.....

The **February 28, 2015 meeting** will be held at the home of HansPaul Hager starting at 1:00pm. HansPaul's telephone number is 408-770-9132. **Note change of meeting date.**
The **March 21, 2015 meeting** will be held at the home of Dennis Buss starting at 1:00pm. Dennis' telephone number is 707-774-6296.

The Hunebedden of the Province Drenthe

By Franklin Ennik

About 200,000 years ago the whole area, of what is now Scandinavia, northern Europe and Asia, was covered with thick ice glaciers. The glaciers moved slowly and carried with them huge granite boulders from the northern mountainous regions. When the Ice Age ended about 70,000 years ago the glaciers melted and in the process dropped their load of huge boulders in the area now bordered in the Scandinavian countries, in northeastern Netherlands and the border region with Germany. In Drenthe there are no mountains or natural formations of granitic rocks.

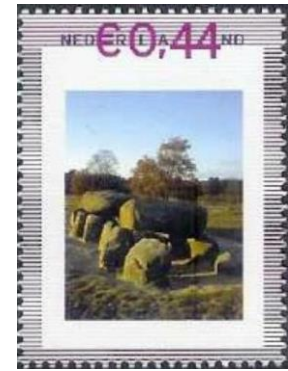
In about 5,000 to 3,000 years BCE there lived in this region the Neolithic Stone Age peoples known as the **Drenthe Funnel-Beaker** people, so described by the style of clay pottery they constructed. These people became early farmers who learned how to grow an early variety of wheat, domesticate cattle and build houses. As the glacial ice receded, scattered populations of these various Neolithic Stone-Age cultures occupied and existed all across the European continent to what is now Russia and western Asia.

A commonality amongst these primitive cultures was the construction of stone-lined burial structures in various styles to honor their dead chieftains and important individuals in what are now called stone/wood-lined crypts, *dolmens*, *menhirs*, *megaliths*, and in the nether region: *hunebedden* = **giant's beds**. The early Dutch peoples who occupied this region thought these stone burial chambers were constructed by giants = *Hunen* or *huyen*. The hunebedden were in fact "passage chambers" rather than burial graves and were supplied with personal possessions of the departed, tools, and food for the journey into the afterlife. Early 18th century excavations found only scattered pot shards, a few bone fragments, jewelry and primitive stone tools but few or no skeletal remains. As a result little importance was given the *hunebedden* until rather recent. The Funnel-Beaker culture and these stone formations are now a serious archeological focus and study, and a popular tourist attraction.

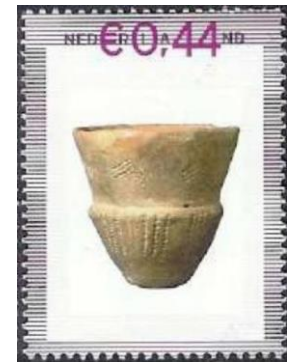
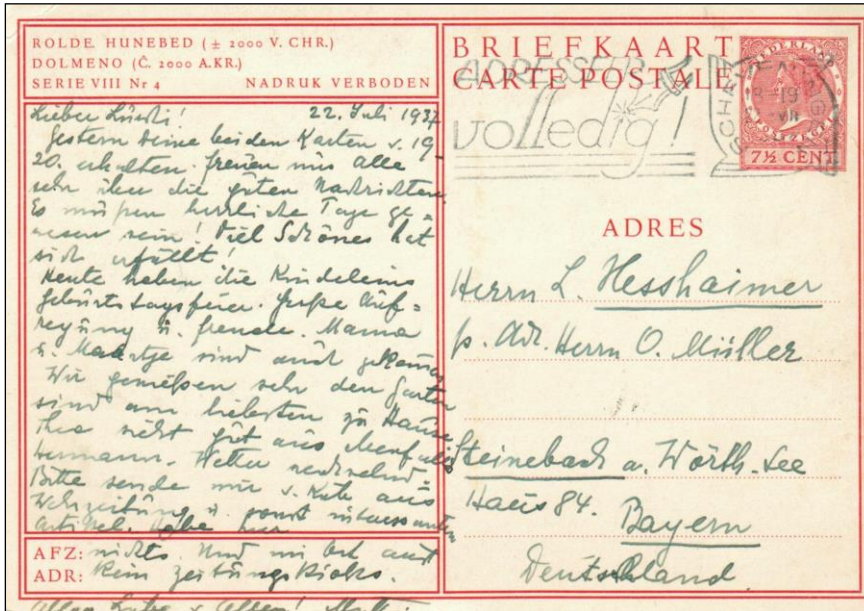
In the Province of Drenthe there are 54 of these hunebedden; two in the Province of Groningen and more examples in adjacent Denmark and Germany. The concentration of these formations, in some locations, is such that one can stand in one place and see five or six constructions in a row. There is much speculation but it is still a mystery how these ancient peoples were able to position and move the massive stones into place.

The hunebed illustrated on this 1937, 7½ cent postal card is designated number D-17 located in Rolde, near Assen. The oldest descriptions of the Drenthe stone structures were recorded in 1547 on the Rolde hunebedden numbers D-17 and D-18. Number D-17 is known as *De Duyvelskotte* = "the devil's house." There is a long history of myth, legend and mystery dating from the Roman period connected with these two hunebedden.





Shown here are two images from the hunebedden including an example of the Funnel-Beaker pottery from this culture that



appeared on 2007 issued *persoonlijk* = personal stamps.

References

- Hans Meijer. <http://www.hunebedden.nl/drenthe.htm>
<http://www.hunebeddenwijzer.nl/geschiedenis/>
 Chris Sweet. Het mysterie van de hunebedden in Rolde. /Pelgrimspad.nl

Postage Due on a Lettersheet (Postblad) of 1911.

By Hans Kremer

I had never seen a Dutch "Postblad" with postage due on it so this cover intrigued me. It turns out that the postage due rules for letters applied as well to Postblads (letterheads and pre-franked folded letters), which makes sense since they are very similar products.



This Postblad was sent in 1911 from Nieuwe-Niedorp (NH.) to Amsterdam. Although the 5 cent Postblad had the correct rate, as per 1-1-1910, this particular Postblad, printed with the image of Princess Wilhelmina, was taken out of circulation and had become invalid. The postal clerk noticed this and put a blue "0" on it in addition to marking off the 5 cent franking at the top left of the postblad.

In 1911 postage due for unfranked or under-franked letters was 5 cent plus the short amount (which in this case was also 5 cent) for a total postage due of 10 cent.

* *
* *

De heer Joh. Sandow, Sarphatipark 106 huis, Amsterdam, is bezig een verzameling van afstempelingen te maken, in gebruik bij de Posterijen, in verband met de plannen, die in overweging zijn, indien eenigszins mogelijk, een nieuwe handleiding over de Nederlandsche afstempelingen samen te stellen. Het materiaal, dat voor dit doel noodig is, bestaat in: stukken met Nederlandsche postalische afstempelingen uit den tijd van pl.m. 1750 tot heden, en verder briefomslagen, kaarten, postbladen, drukwerken, enz. (steeds de geheele stukken, geen uitknipsels). De stempels zijn: „vertrek-, aankomst-, vernietiging- of kantoorstempels van postkantoren, bijkantoren, hulppostkantoren, spoorwegpostkantoren, mailpostkantoren, enz., of hulpstempels, bijv.: „ontoe-reikend“, „brievenbus“, „aangeteekend“, „afgeschreven“, „rebut“, „P. P.“, „P. D.“, „locaal“, enz., enz.

De heer Sandow verzoekt ons, dit plan onder de aandacht onzer lezers te willen brengen en dezen op te wekken hem te helpen, de verzameling zoo volledig mogelijk te maken.

* *
* *

As can be seen, the outer edges of the Postblad are still there. They had to be torn off before one could read the contents. Since this was not done it appears to be "Maakwerk." This is even more likely when one recognizes the name of the addressee "J. Sandow." In 1912 he put an advertisement in the paper asking for help collecting various Dutch philatelic materials, which he wanted to use for publishing a handbook. He most likely addressed this Postblad to himself. No need for him to open it.

Reference:

ANWB Toeristenbond Voor Nederland. *De Kampioen*. 19 Juli 1912. Bladz. 590.